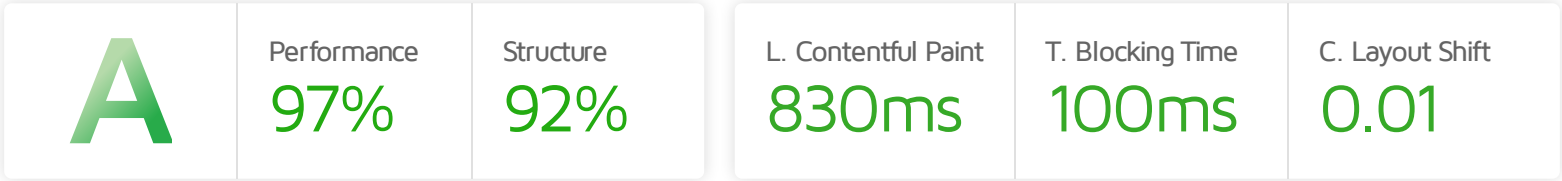


Performance Report for:

https://envatotemplate.com/presta/v5_motomac_28/en/

Report generated: Fri, Aug 23, 2024 1:16 AM -0700
 Test Server Location: Vancouver, Canada
 Using: Chrome 117.0.0.0, Lighthouse 11.0.0



Top Issues

Med	Avoid an excessive DOM size <small>TBT</small>	2,036 elements
Med	Serve static assets with an efficient cache policy	Potential savings of 1.18MB
Low	Use passive listeners to improve scrolling performance	1 event listener not passive
Low	Avoid enormous network payloads <small>LCP</small>	Total size was 1.76MB
Low	Properly size images	Potential savings of 95.1KB

Focus on these audits first

These audits likely have the largest impact on your page performance.

Structure audits do not directly affect your Performance Score, but improving the audits seen here can help as a starting point for overall performance gains.

Page Details



Total Page Size - 1.76MB



Total Page Requests - 61



HTML JS CSS IMG Video Font Other

How does this affect me?

Modern web users have a short attention span and expect a fast and seamless website experience. Delivering that fast experience can result in more traffic, more conversions, and more happiness.

As if you didn't need more incentive, **Google use Page Speed and Page Experience (including Web Vitals) signals in their ranking algorithm.**

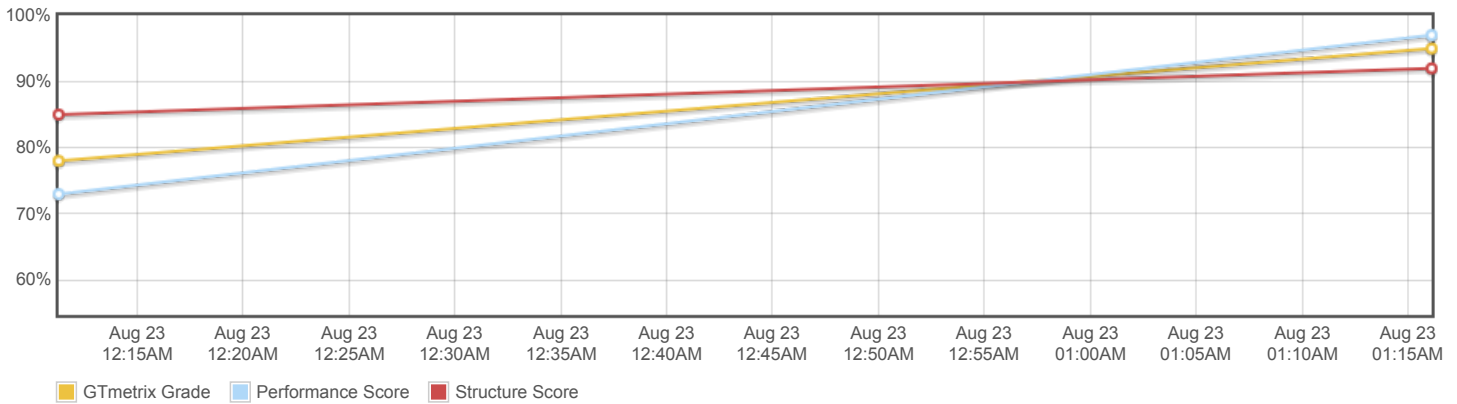
About GTmetrix



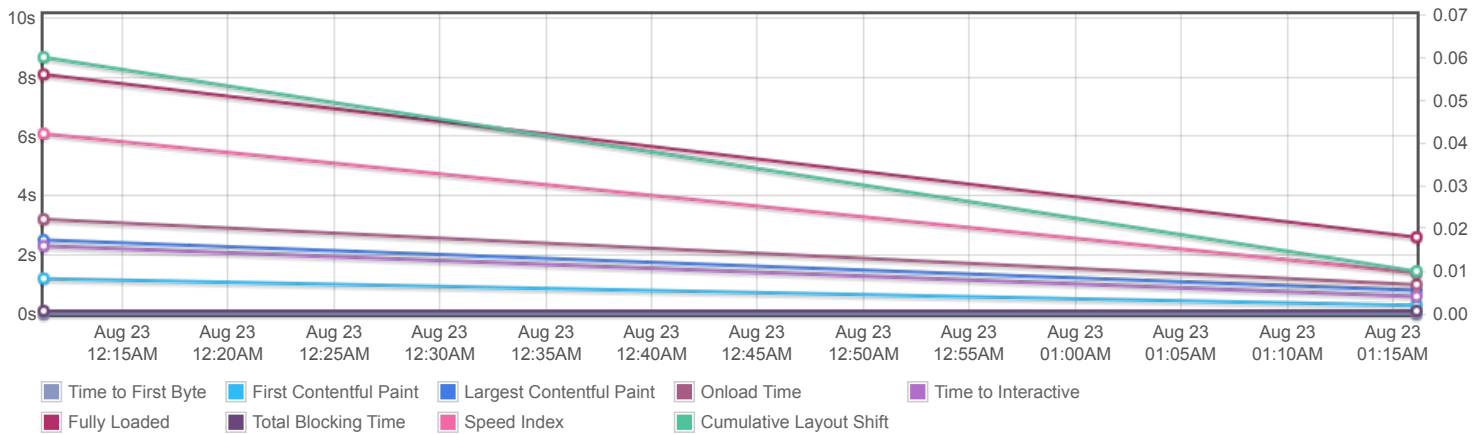
GTmetrix was developed as a tool for customers to easily test the performance of their webpages.

[Learn more about us.](#)

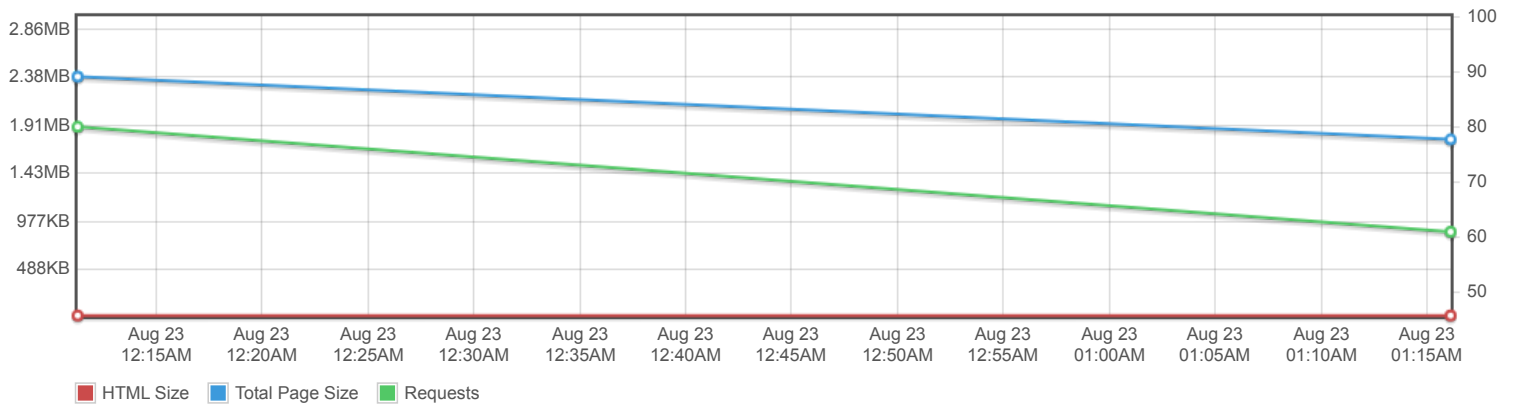
Page scores



Page metrics

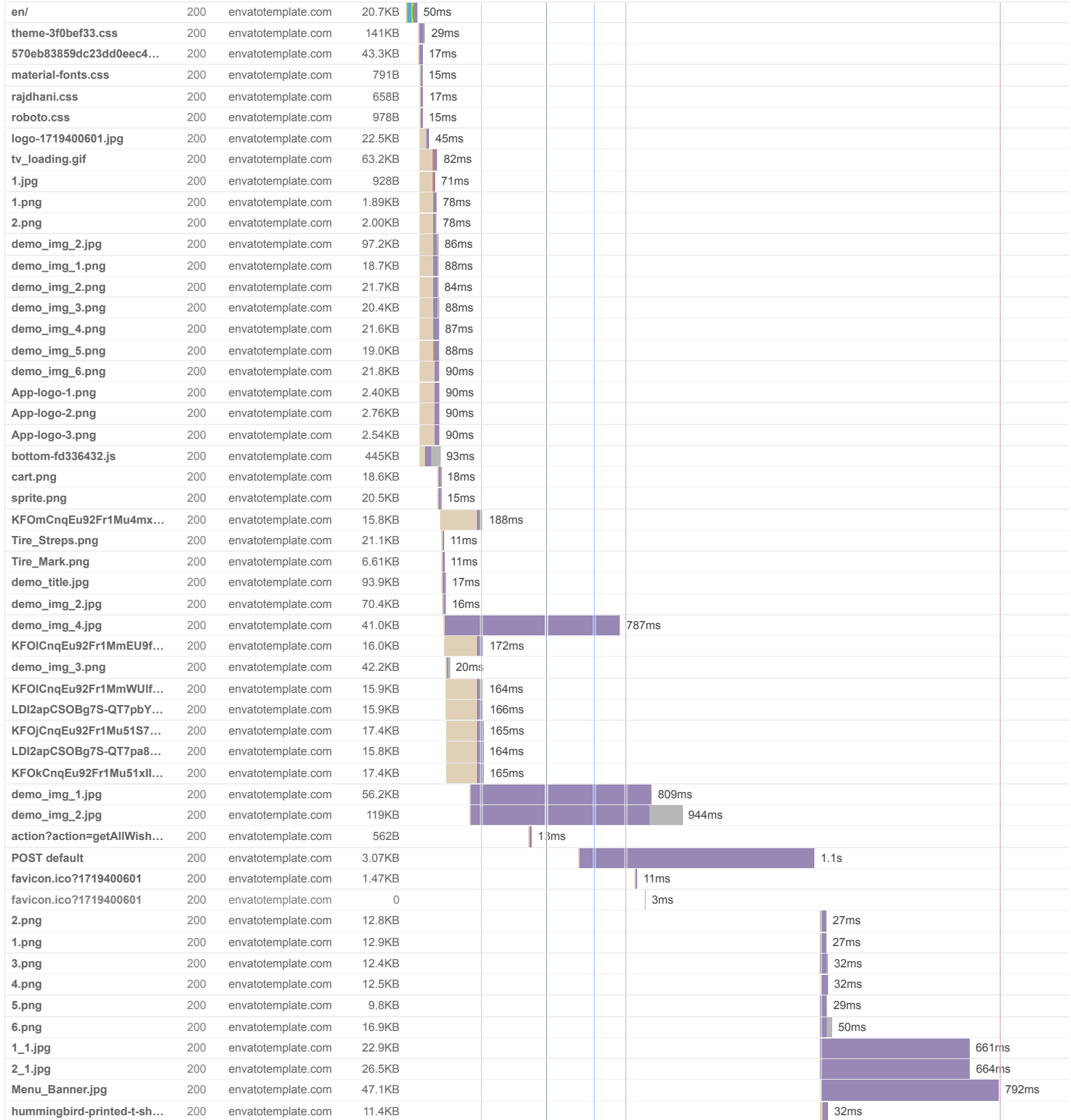


Page sizes and request counts



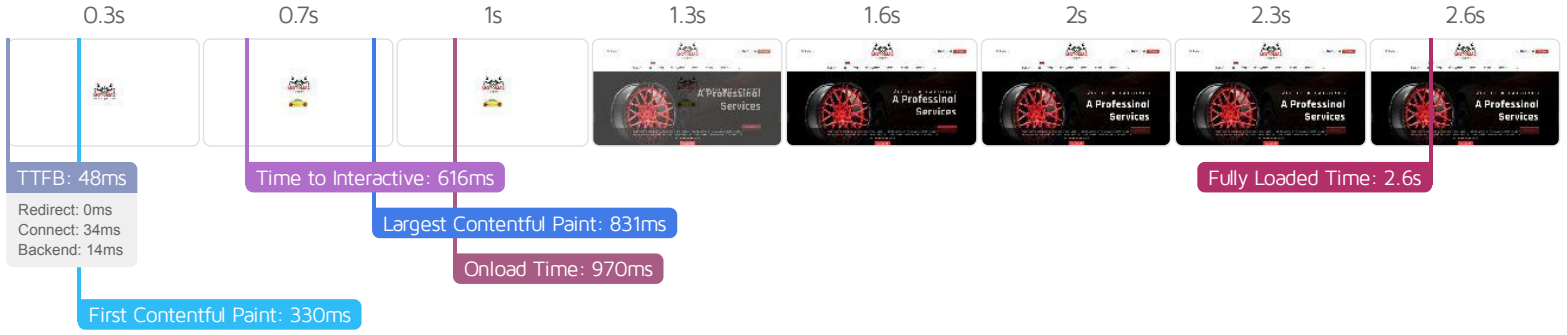
The waterfall chart displays the loading behaviour of your site in your selected browser. It can be used to discover simple issues such as 404's or more complex issues such as external resources blocking page rendering.

Motomac Mega Super Store



mug-the-best-is-yet-to-co...	200	envatotemplate.com	6.90KB					28ms
the-best-is-yet-to-come-fr...	200	envatotemplate.com	15.5KB					51ms
demo_img_1.png	200	envatotemplate.com	3.19KB					49ms
demo_img_2.png	200	envatotemplate.com	3.84KB					31ms
demo_img_3.png	200	envatotemplate.com	4.03KB					49ms
demo_img_4.png	200	envatotemplate.com	3.62KB					49ms
demo_img_5.png	200	envatotemplate.com	3.58KB					49ms
demo_img_6.png	200	envatotemplate.com	2.08KB					49ms

61 Requests	1.76MB (3.77MB Uncompressed)	Fully Loaded 2.6s (Onload 970ms)
--------------------	-------------------------------------	---



Performance Metrics

<p>First Contentful Paint</p> <p>How quickly content like text or images are painted onto your page. A good user experience is 0.9s or less.</p>	<p>Good - Nothing to do here</p> <p>330ms</p>	<p>Time to Interactive</p> <p>How long it takes for your page to become fully interactive. A good user experience is 2.5s or less.</p>	<p>Good - Nothing to do here</p> <p>615ms</p>
<p>Speed Index</p> <p>How quickly the contents of your page are visibly populated. A good user experience is 1.3s or less.</p>	<p>OK, but consider improvement</p> <p>1.4s</p>	<p>Total Blocking Time</p> <p>How much time is blocked by scripts during your page loading process. A good user experience is 150ms or less.</p>	<p>Good - Nothing to do here</p> <p>100ms</p>
<p>Largest Contentful Paint</p> <p>How long it takes for the largest element of content (i.e., a hero image) to be painted on your page. A good user experience is 1.2s or less.</p>	<p>Good - Nothing to do here</p> <p>830ms</p>	<p>Cumulative Layout Shift</p> <p>How much your page's layout shifts as it loads. A good user experience is a score of 0.1 or less.</p>	<p>Good - Nothing to do here</p> <p>0.01</p>

Browser Timings

Redirect	0ms	Connect	34ms	Backend	14ms
TTFB	48ms	First Paint	330ms	DOM Int.	607ms
DOM Loaded	616ms	Onload	970ms	Fully Loaded	2.6s

IMPACT	AUDIT	
Med	Avoid an excessive DOM size <small>TBT</small>	2,036 elements
Med	Serve static assets with an efficient cache policy	Potential savings of 1.18MB
Low	Use passive listeners to improve scrolling performance	1 event listener not passive
Low	Avoid enormous network payloads <small>LCP</small>	Total size was 1.76MB
Low	Properly size images	Potential savings of 95.1KB
Low	Avoid chaining critical requests <small>FCP LCP</small>	2 chains found
Low	Efficiently encode images	Potential savings of 127KB
Low	Reduce JavaScript execution time <small>TBT</small>	303ms spent executing JavaScript
Low	Avoid long main-thread tasks <small>TBT</small>	2 long tasks found
Low	Defer offscreen images	Potential savings of 371KB
Low	Ensure text remains visible during webfont load <small>FCP LCP</small>	1 font found
Low	Reduce unused CSS <small>FCP LCP</small>	Potential savings of 128KB
Low	Reduce unused JavaScript <small>LCP</small>	Potential savings of 274KB
Low	Avoid non-composited animations <small>CLS</small>	21 animated elements found
Low	Serve images in next-gen formats	Potential savings of 543KB
N/A	Reduce initial server response time <small>FCP LCP</small>	Root document took 14ms
N/A	Eliminate render-blocking resources <small>FCP LCP</small>	Potential savings of 0 ms
N/A	Avoid large layout shifts <small>CLS</small>	4 elements found
N/A	Largest Contentful Paint element <small>LCP</small>	830 ms
N/A	Minimize main-thread work <small>TBT</small>	Main-thread busy for 1.6s
N/A	Avoid serving legacy JavaScript to modern browsers <small>TBT</small>	Potential savings of 66B
N/A	Reduce the impact of third-party code <small>TBT</small>	
N/A	User Timing marks and measures	